

# Payroll & Census Data Collection Services

Just as your retirement plan benefits are valuable, so is your time. That's why we're introducing an optional service that leverages API connection to provide us with a comprehensive overview of your payroll data.

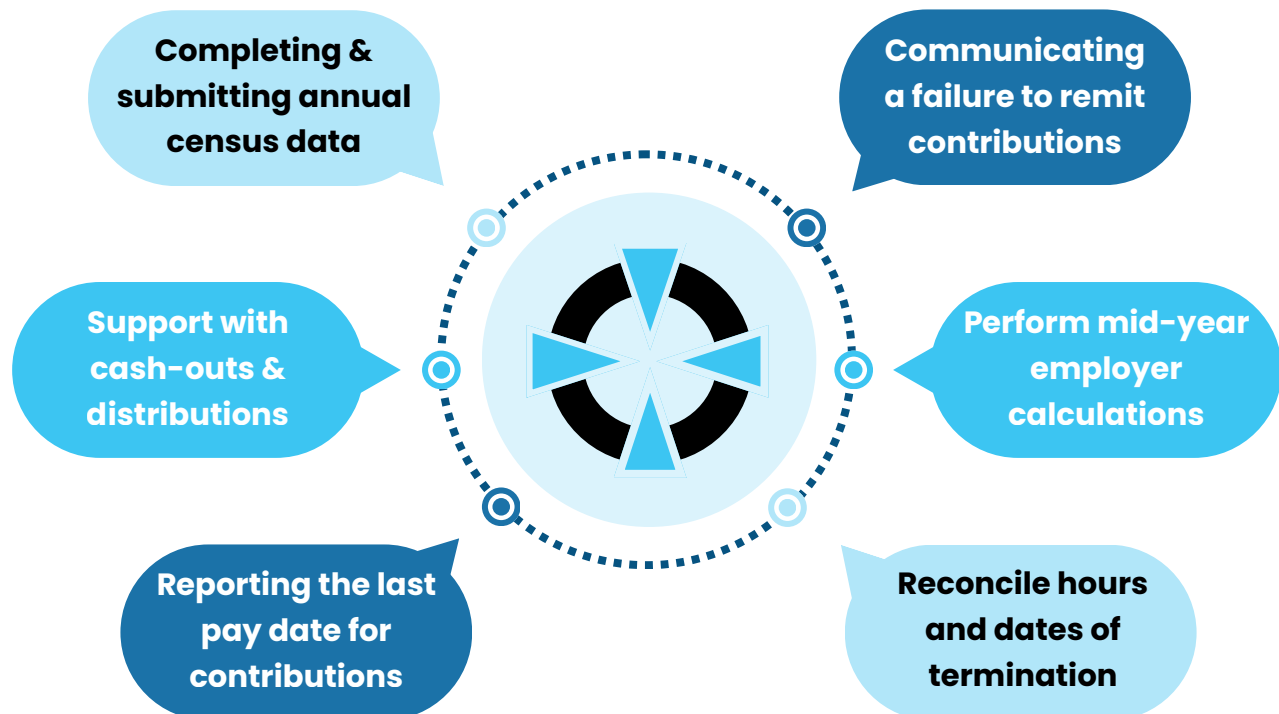
With this access, we can efficiently gather the annual census data required for filing your Form 5500. This approach ensures accuracy and simplicity, eliminating common errors and complexities.

Read on to discover how we can save you time and effort by streamlining the process of collecting your annual census data!

## Key Benefits Annual API Connection :

- ✓ **Accurate year-end census data report**
- ✓ **Time savings of producing year-end census data reports**
- ✓ **Streamlined data transfer reducing manual errors**
- ✓ **Stress-free data collection process**
- ✓ **Expertise & knowledge behind data collection process**
- ✓ **Cost efficiency and reduction of compliance risks**

**Need a more hands-on approach? See below the services our Monthly Payroll API Connection offers!**



PAYCHEX

paycom

Paycor

paylocity

intuit quickbooks

RIPLING

UKG



**mybenefits**  
We bring it all together for you.



**FIRST PARTY  
ADMINISTRATOR**  
Your ERISA 3(16) Fiduciary